

BANDPASS FILTER

Filter Type

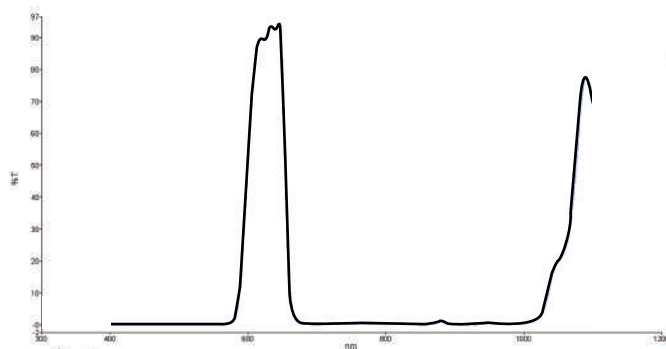
Thread Dia. x Pitch (mm)	C-Mount	M22.5 x0.5	M25.5 x0.5	M27 x0.5	M30.5 x0.5	M34 x0.5	M35.5 x0.5	M37 x0.75	M37.5 x0.5	M40.5 x0.5	M43 x0.75	M46 x0.75	M49 x0.75	M52 x0.75	M55 x0.75	M58 x0.75	M62 x0.75
External ϕ	25.4	24	27.5	29	32.5	36	37	39	39.5	42	45	48	51	54	57	60	65
Aperture ϕ	19.5	18.5	21	23	26.5	30	31.5	33	19.5	36	39.5	41.5	44.5	47.5	50.5	53.5	57.5

Thread Dia. x Pitch (mm)	M67.0 x0.75	M68.0 x0.75	M72.0 x0.75	M77.0 x0.75	M82.0 x0.75	M86.0 x0.75	M95.0 x1.0	M105 x1.0
External ϕ	70	70	75	80	85	90	99	109
Aperture ϕ	63.2	63.2	67.7	73	78.8	80	90	100



BP625 Transmission Data(Typical)

wavelength (nm)	transmission (%)	wavelength (nm)	transmission (%)	wavelength (nm)	transmission (%)
400	0.014587	630	92.649364	870	0.319106
410	0.01037	640	92.779141	880	0.948917
420	0.009207	650	79.33175	890	0.309598
430	0.008072	660	12.120886	900	0.099367
440	0.007234	670	1.258609	910	0.103796
450	0.005639	680	0.246574	920	0.07655
460	0.006645	690	0.097273	930	0.067875
470	0.010623	700	0.079185	940	0.292044
480	0.011236	710	0.135898	950	0.501711
490	0.004492	720	0.434016	960	0.416548
500	0.007007	730	0.359101	970	0.253195
510	0.005445	740	0.255103	980	0.177772
520	0.001261	750	0.348481	990	0.229093
530	0.012224	760	0.355613	1000	0.348134
540	0.021358	770	0.246947	1010	0.725415
550	0.023169	780	0.247378	1020	1.771503
560	0.040726	790	0.296486	1030	5.239407
570	0.178773	800	0.302165	1040	14.16257
580	1.837011	810	0.38405	1050	19.747572
590	16.677582	820	0.576711	1060	23.625746
600	53.93057	830	0.250385	1070	35.886366
610	81.894194	840	0.115622	1080	60.945472
620	89.724222	850	0.093075	1090	77.429511
		860	0.080975		



Blocking: > OD3
FWHM: 40nm(±5nm)