

BANDPASS FILTER

Filter Type

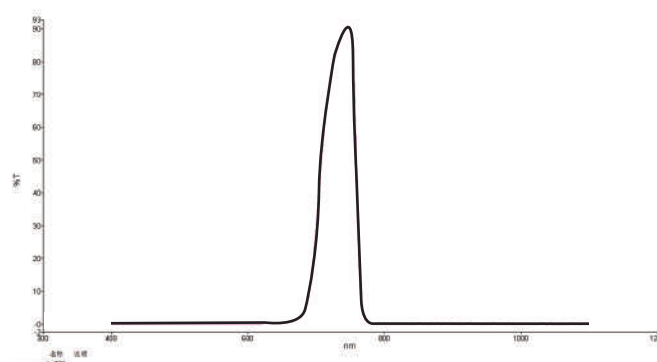
Thread Dia. × Pitch (mm)	C-Mount	M22.5 × 0.5	M25.5 × 0.5	M27 × 0.5	M30.5 × 0.5	M34 × 0.5	M35.5 × 0.5	M37 × 0.75	M37.5 × 0.5	M40.5 × 0.5	M43 × 0.75	M46 × 0.75	M49 × 0.75	M52 × 0.75	M55 × 0.75	M58 × 0.75	M62 × 0.75
External ϕ	25.4	24	27.5	29	32.5	36	37	39	39.5	42	45	48	51	54	57	60	65
Aperture ϕ	19.5	18.5	21	23	26.5	30	31.5	33	19.5	36	39.5	41.5	44.5	47.5	50.5	53.5	57.5

Thread Dia. × Pitch (mm)	M67.0 × 0.75	M68.0 × 0.75	M72.0 × 0.75	M77.0 × 0.75	M82.0 × 0.75	M86.0 × 0.75	M95.0 × 1.0	M105 × 1.0
External ϕ	70	70	75	80	85	90	99	109
Aperture ϕ	63.2	63.2	67.7	73	78.8	80	90	100



BP735 Transmission Data(Typical)

wavelength (nm)	transmission (%)	wavelength (nm)	transmission (%)	wavelength (nm)	transmission (%)
400	0.011559	630	0.121845	860	0.08667
410	0.011734	640	0.203475	870	0.065531
420	0.011645	650	0.32787	880	0.110381
430	0.010494	660	0.575137	890	0.090033
440	0.009645	670	1.174539	900	0.015998
450	0.008324	680	3.112861	910	0.001242
460	0.010632	690	10.338943	920	0.084701
470	0.013992	700	30.28409	930	0.029773
480	0.012734	710	56.356681	940	0.05384
490	0.006739	720	74.475839	950	0.06464
500	0.008564	730	83.641084	960	0.121139
510	0.010372	740	89.091497	970	0.020362
520	0.013614	750	89.432784	980	0.029717
530	0.011001	760	36.499725	990	0.016642
540	0.010799	770	2.269601	1000	0.043163
550	0.01051	780	0.20588	1010	0.021409
560	0.009343	790	0.034834	1020	0.014496
570	0.00534	800	0.007768	1030	0.224304
580	0.003029	810	0.001379	1040	0.107685
590	0.004661	820	0.00118	1050	0.115254
600	0.016532	830	0.008254	1060	0.001943
610	0.03807	840	0.031712	1070	0.040997
620	0.069925	850	0.084381	1080	0.305828
				1090	0.286775



Blocking: > OD3
F W H M: 40nm(±5nm)