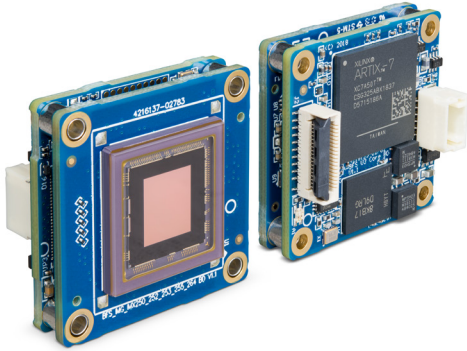




INDUSTRIAL/MACHINE VISION APPLICATIONS



FLIR BLACKFLY[®] S BOARD-LEVEL

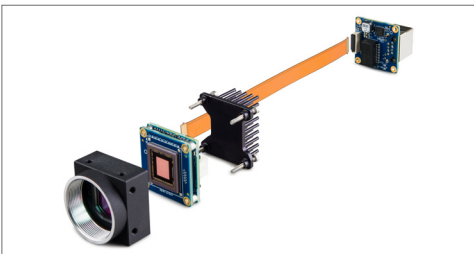
P/N: BFS-U3-31S4-BD2

SMALL PACKAGE, POWERFUL RESULTS

The FLIR Blackfly S Board Level variants are high performance, machine vision, area scan cameras designed for embedding into tight spaces. Unlike many board level cameras, it boasts a rich feature set applied to the latest CMOS sensors; the same feature set as the cased version. It is ready for integration with proven compatibility with popular SBCs and SOMs.

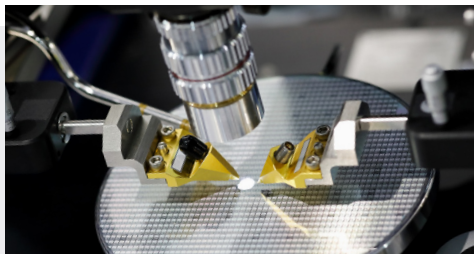
The Blackfly S board level models enable OEMs to develop smaller, lighter, and lower cost solutions with embedded system connectivity and rich features.

www.flir.com/products/blackfly-s-board-level



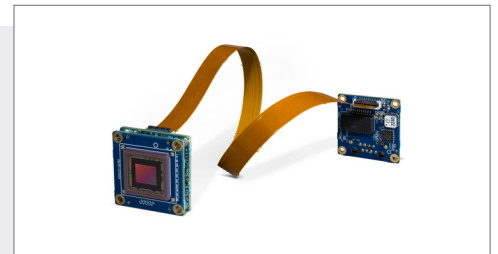
DESIGNED FOR INTEGRATION IN SMALL SPACES

These models are ideal for mobile, handheld and desktop device integration with their 29 x 29 x 12 mm board level footprint, USB3 or GigE across FPC connection with latching connector, and low profile JST GPIO connector, and no fixed lens mount.



HIGH PERFORMANCE IMAGING

It is rare for board level cameras to integrate the most advanced CMOS sensors and come with a full feature set. The Blackfly S board level variants integrate the latest Pregius global shutter CMOS image sensors for distortion free, high dynamic range image capture. They have the same rich feature set as the cased variants allowing both automatic and precise manual control over image capture and on-camera pre-processing.



EMBEDDED ECO-SYSTEM SUPPORT

Ideal of embedded systems, the entire Blackfly S camera family provides proven compatibility with popular SBCs and Operating Systems including desktop Windows and Linux on ARM, x64 and x86.



SPECS	BFS-U3-31S4M-BD2	BFS-U3-31S4C-BD2
Resolution	2048 x 1536	
Frame Rate*	55 FPS	
Megapixels	3.2 MP	
Chroma	Mono	Color
Sensor	Sony IMX265, CMOS, 1/1.8"	
Readout Method	Global shutter	
Pixel Size	3.45 µm	
Lens Mount	Sold separately	
ADC	12-bit	
Minimum Frame Rate**	1 FPS	
Gain Range**	0 to 47 dB	
Exposure Range**	25 µs to 30 s	
Acquisition Modes	Continuous, Single Frame, Multi Frame	
Partial Image Modes	Pixel binning, decimation, ROI	
Image Processing	Gamma, lookup table, and sharpness	Color correction matrix, gamma, lookup table, saturation, and sharpness
Sequencer	Up to 8 sets using 6 features	
Image Buffer	240 MB	
User Sets	2 user configuration sets for custom camera settings	
Flash Memory	6 MB non-volatile memory	
Non-isolated I/O	4 bi-directional	
Auxiliary Output	3.3 V, 120 mA maximum	
Serial Port	Supported	
Interface	USB 3.1 Gen 1	
Interface Connector	Hirose TF38 FPC connector	
Power Requirements	5 V via USB3 interface	
Power Consumption	3 W maximum	
Dimensions/Mass	29 mm x 29 mm x 10 mm / 10 g	
Machine Vision Standard	USB3 Vision v1.0	
Compliance	CE, FCC, RoHS, REACH / ECCN is EAR099	
Temperature	Operating: 0°C to 50°C Storage: -30°C to 60°C	
Humidity	Operating: 20% to 80% (no condensation) Storage: 30% to 95% (no condensation)	
Warranty	3 years	

*Frame rates are measured with Device Link Throughput Limit of 380 MBps and Acquisition Frame Rate disabled. Values are rounded down to whole numbers.

**Values are the same in binning and no binning modes.

FLIR Integrated Imaging Solutions

CANADA

12051 Riverside Way
Richmond, BC, Canada
V6W 1K7
T: +1 866.765.0827 (toll free)
T: +1 604.242.9937
F: +1 604.242.9938
E: mv-sales@flir.com

USA

T: +1 866.765.0827 (toll free)
E: mv-na-sales@flir.com

www.flir.com/mv

EUROPE

T: +49 7141 488817-0
F: +49 7141 488817-99
E: mv-eusales@flir.com

CHINA

T: +86 10 8215 9938
F: +86 10 8215 9936
E: mv-chinasales@flir.com

ASIA

E: mv-asiasales@flir.com

www.flir.com
NASDAQ: FLIR

©2020 FLIR® Integrated Imaging Solutions Inc. All rights reserved.
Names and marks appearing on the products herein are either registered trademarks or trademarks of FLIR® Systems, Inc. and/or its subsidiaries. Specifications are subject to change without notice.

VN: 20-0305-OEM-BFS-U3-31S4-BD2-v1

FIND THE BEST BLACKFLY S FOR YOUR NEEDS



The World's Sixth Sense®