

## BOA™ Spot XL Vision Sensors



### FEATURES AND BENEFITS

- » Fully integrated vision solution includes software, processing, lighting and optics
- » Easy setup for first time or experienced vision users
- » Versatile toolset supports widespread applicability
- » Integrated factory protocols make it easy to communicate with 3rd party equipment
- » Offers features and capabilities normally found in higher-end vision solutions
- » Standard and high resolution sensor options
- » M12 or C-mount lens options
- » White, Red, Blue or external light options
- » Flexible mounting options
- » Hardware or software job switching
- » Remote monitoring and control
- » FTP image transfers
- » Built for factory environments
- » Low cost of ownership

### OVERVIEW

**BOA Spot XL vision sensors offer simplicity and affordability for error-proofing, identification and guidance applications.**

The BOA Spot XL vision sensor combines the power and flexibility of a BOA vision system with integrated optics, lights and easy-to-use setup software to deliver high value capabilities at a low cost of ownership.

This highly versatile sensor is fully equipped with vision tools and capabilities suiting a range of industrial applications for manufacturing, logistics and general automation. BOA Spot XL tools can be combined and used multiple times to solve simple or complex inspection tasks that go well beyond the capabilities of traditional sensors.

### USER INTERFACE



The BOA Spot XL User Interface is quick to learn and applicable for both novice and expert users alike. Guided setup is supported on the top navigation bar, while the left and bottom panels are used for function-specific setup, advanced control and status reporting. The interface offers a full complement of features for both setup and runtime operation.

The application software is resident on the sensor and the user interface is conveniently accessed from the device webpage.

**SPECIFICATIONS**

FEATURE		BOA Spot-XL Models		
Model Features		0640M	0640C	1280M
<b>User Interface (GUI)</b>		Graphical point and click		
<b>Job Storage</b>	# Jobs on Device	32		
<b>Sensor</b>	Type	1/3" Mono Global Shutter		
	Mono/Color	Mono	Color	Mono
	Resolution	640 x 480	640 x 480	1280 x 960
	Rate	45 fps	30 fps	30 fps
<b>Lens</b>	M12	6, 8, 12 or 16 mm (factory installed)		
	C-Mount Option	6 mm–50 mm (user installed)		
<b>Illumination</b>	Standard	White, Blue or Red LED Ring (factory installed)		
	Optionals	External light with strobe control		
<b>Vision Capabilities</b>	Alignment	4 Position Locators		
	Error Proofing	Pattern Matching		
		Feature Measuring		
		Verification		
	Identification	1D Code Reading		
		2D Matrix Reading		
		ISO 15415 / 16022, AIM DPM Grading		
		Character Reading (OCR)		
	Guidance	Pattern Matching		
		Calibration		
		Origin Control		
	Scripting	I/O		
		Program Customization		
Solution Switching				
PLC Triggering				
<b>Communications</b>	Connections	Ethernet, I/O, RS-232		
	Inputs	Trigger + 2 general purpose / job select ON > 10VDC; OFF < 2VDC		
	Outputs	3 general purpose 100 mA max load at 24V		
	Protocols	Ethernet/IP, Profinet, Modbus		
	Imaging Logging	FTP		
<b>Mechanical</b>	Material	Aluminum		
	Dimensions	61 mm x 58 mm x 57 mm		
	Mounting	8 x M4		
	Protection Rating	IP67		
<b>Operating</b>	Power	300 mA @ 24V (including lamp)		
	Temperature	0–50°C		
	Access	Password Controlled (user option)		

**TYPICAL APPLICATIONS**

The BOA Spot XL vision sensor offers an advanced tool set suitable for a range of industrial applications.



2D Matrix



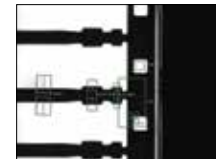
OCR



Matrix DPM



Barcode



Measure



Count



Contour



Diameter



Match



Color

**Americas**  
 Boston, USA  
 +1 978-670-2000  
 sales.americas@teledynedalsa.com

**Europe**  
 Krailling, Germany  
 +49 89-89-54-57-3-80  
 sales.europe@teledynedalsa.com

**Asia Pacific**  
 Tokyo, Japan  
 +81 3-5960-6353  
 sales.asia@teledynedalsa.com

Shanghai, China  
 +86 21-3368-0027  
 sales.asia@teledynedalsa.com