

# INFINITY8 Camera Series

## Digital Microscope Cameras

High performance compact microscope cameras that provide both monochrome and vivid color images for a wide range of applications

Teledyne Lumenera's INFINITY8 Microscope Camera Series range in resolution from 2MP to 20MP using the latest in advanced CMOS sensor technology for a wide range of imaging applications from low cost fluorescence imaging to ultra high-resolution stereo microscopy. These cameras are designed to provide both performance and value in today's climate of increasingly constrained lab budgets.



### Software

Like all INFINITY Microscope Cameras, INFINITY8 Microscope Cameras include a licence for [INFINITY ANALYZE 7](#), the latest version of Teledyne Lumenera's powerful microscopy software for both brightfield and fluorescence imaging, image stitching, measurements, annotation, time lapse, video clips, and post-processing functions.

### High-Performance

The INFINITY8-2M provides exceptional low light sensitivity for routine fluorescence imaging, while the INFINITY8-20C is ideal for high resolution imaging. For both resolution and speed, the INFINITY8-8 is available in both color and monochrome models. All color models include an IR-cut off filter for higher color fidelity.





### Design

The INFINITY8 microscopy cameras have a sleek new camera body with a heat-dissipating design to reduce noise without the need for expensive cooling or fans. The sensors selected for the new INFINITY8 camera series rival legacy CCD cameras at a fraction of the price.

### Versatility

The INFINITY8 cameras range from monochrome for cost-effective fluorescence imaging to ultra high-resolution color for stereo microscopy - and are compatible with all C-mount microscope brands. Breathe life into your existing microscope by adding a new camera to save time and improve workflow.

## INFINITY8 CAMERA SERIES SPECIFICATIONS

	Active Resolution	Sensor Model	Frame Rate**	Pixel Size	Full Well Charge	Read Noise	Dynamic Range	Optical Format	Coupler Magnification	Part Number
 <b>INFINITY8-2M</b>	1608 x 1104	Sony IMX432 (1.7M)	96 fps	9.00 µm	100.4K e- (19.2K e-***)	21.6 e- (4.4 e-***)	72 dB	1.1"	1x	i8-LM00-02M
 <b>INFINITY8-8C</b>	3840 x 2160	Sony IMX334 (8.3M)*	44 fps	4.50 µm	7.03K e-	2.0 e-	73 dB	1/1.7"	05x - 0.63x	i8-LC00-08M
 <b>INFINITY8-8M</b>	3840 x 2160	Sony IMX334 (8.3M)*	44 fps	4.50 µm	7.03K e-	2.0 e-	73 dB	1/1.7"	05x - 0.63x	i8-LM00-08M
 <b>INFINITY8-20C</b>	5472 x 3648	Sony IMX183 (20M)*	19.6 fps	2.4 µm	14.6K e-	3.25 e-	73 dB	1"	1x	i8-LC00-20M

\* Rolling Shutter sensors  
 \*\* Maximum sustainable FPS  
 \*\*\* High Conversion Gain (HCG) mode

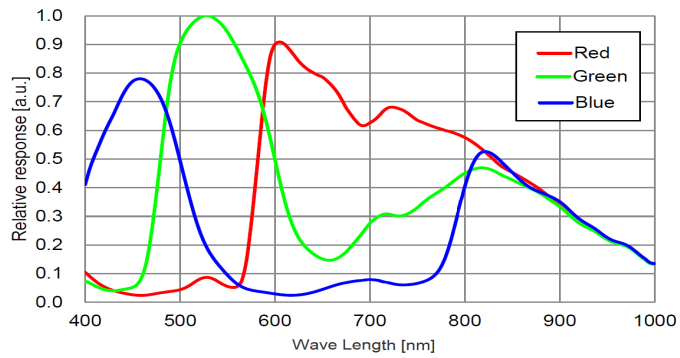
## INFINITY8 CAMERA SERIES SPECIFICATIONS (COMMON TO ALL MODELS)

INFINITY8 Microscopy Cameras	
Camera Interface	USB3.1 (5 Gbit/s)
Exposure Control	Manual and automatic control
Data Format	8 or 12-bit
I/O Ports	Support for input trigger and strobe out
Image Buffer	128 MB
Lens Mount	C mount
Size (L x H x W)	41.5 mm (max) x 45 mm x 45 mm
Mass	108 g
Operating Temp	0 to 50 °C
Power Supply	5V via Power Over USB3 Cable
Power Dissipation	2.3 W to 3.6 W
Data Connector	USB3 Type micro-B (Locking Connector supported)
I/O Connector	JST# SM09B-NSHSS-TB (mating part: JST # NSHR-09V-S), GPIO cable available as an accessory
Software Platform	Teledyne Lumenera INFINITY ANALYZE 7, supported on both Windows and Mac, supported third-party plug-ins for MetaMorph and MicroManager
Included In The Box	INFINITY Microscope Camera, USB3 Micro-B to Type-A Cable (3 Meter/ 9.75 feet)

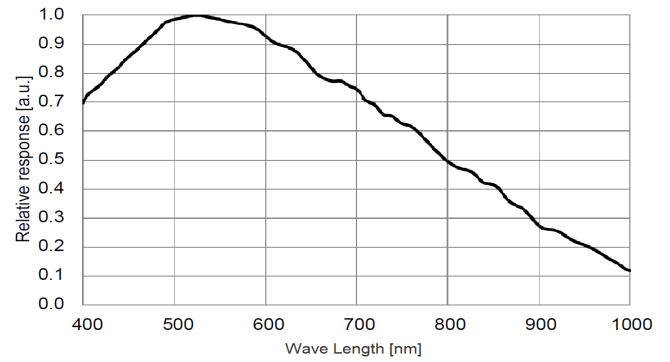


## RESPONSIVITY GRAPHS

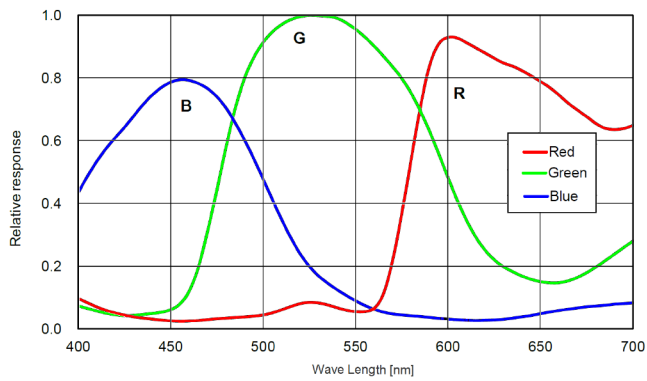
### INFINITY8-8 Color



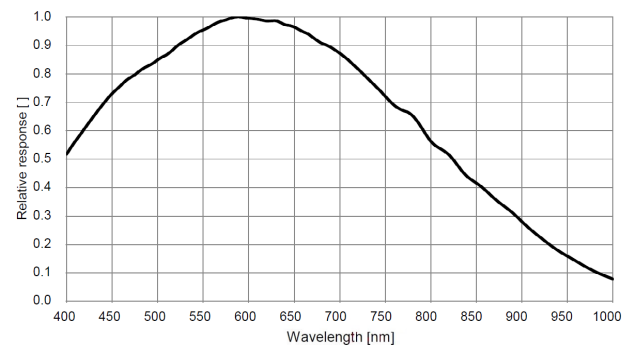
### INFINITY8-8 Mono



### INFINITY8-20 Color

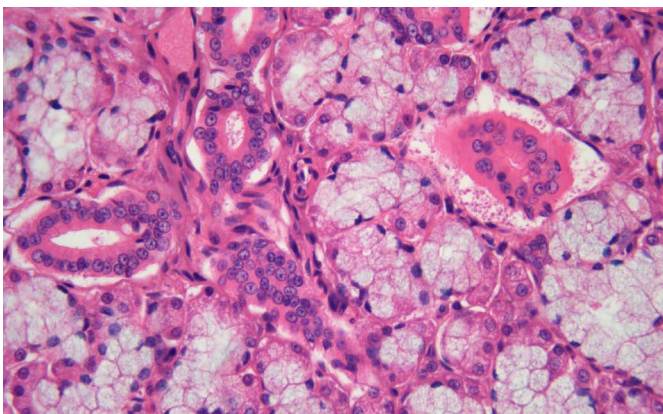


### INFINITY8-2 Mono

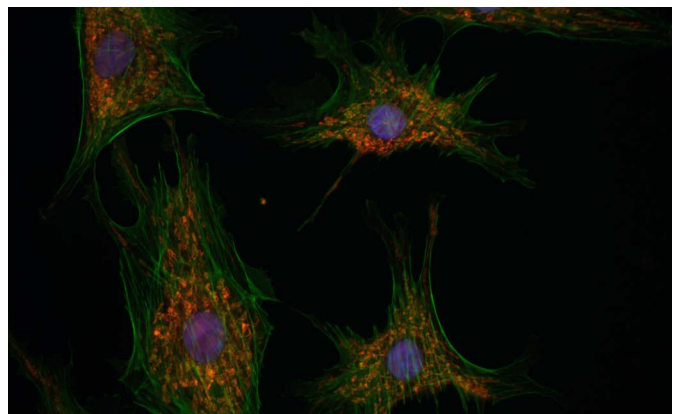


## IMAGES CAPTURED WITH INFINITY8 CAMERAS

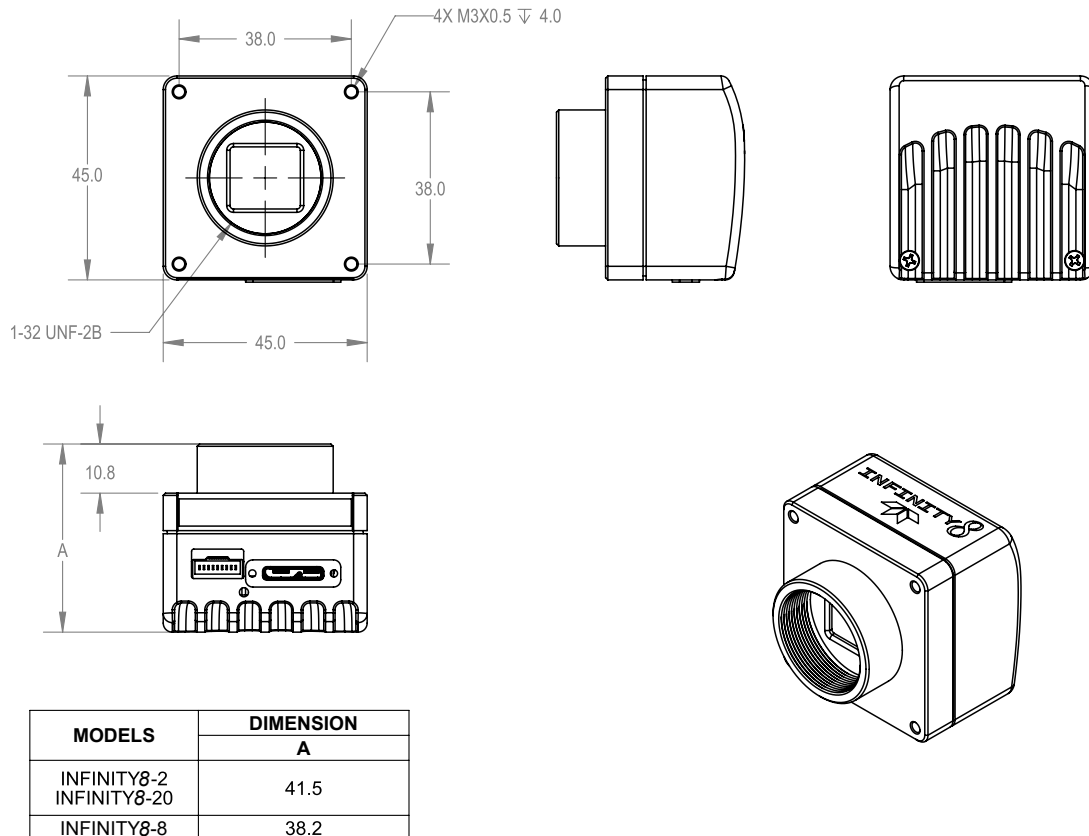
### 40X magnification with an INFINITY8-8C



### 60X magnification with an INFINITY8-2M



# INFINITY8 Camera Series Specifications



[www.teledynelumenera.com](http://www.teledynelumenera.com)

## North America

Ottawa, Canada  
7 Capella Court,  
(TEL) +1 613-736-4077

© 2021 Teledyne Lumenera Corporation. All rights reserved.  
Design, features, and specifications are subject to change without notice. 06172021



# Microscopy cameras featuring Sony Pregius & Starvis sensors

[www.teledynelumenera.com](http://www.teledynelumenera.com)

**North America**

Ottawa, Canada  
7 Capella Court,  
(TEL) +1 613-736-4077

© 2021 Teledyne Lumenera Corporation. All rights reserved.  
Design, features, and specifications are subject to change without notice. 06172021

 **TELEDYNE LUMENERA**  
Everywhereyoulook™